

MONTHLY MEMBERSHIP PROGRESS REPORT

LOCATION SOUTH CAROLINA

District 32 C

Results as of: 9/30/2020

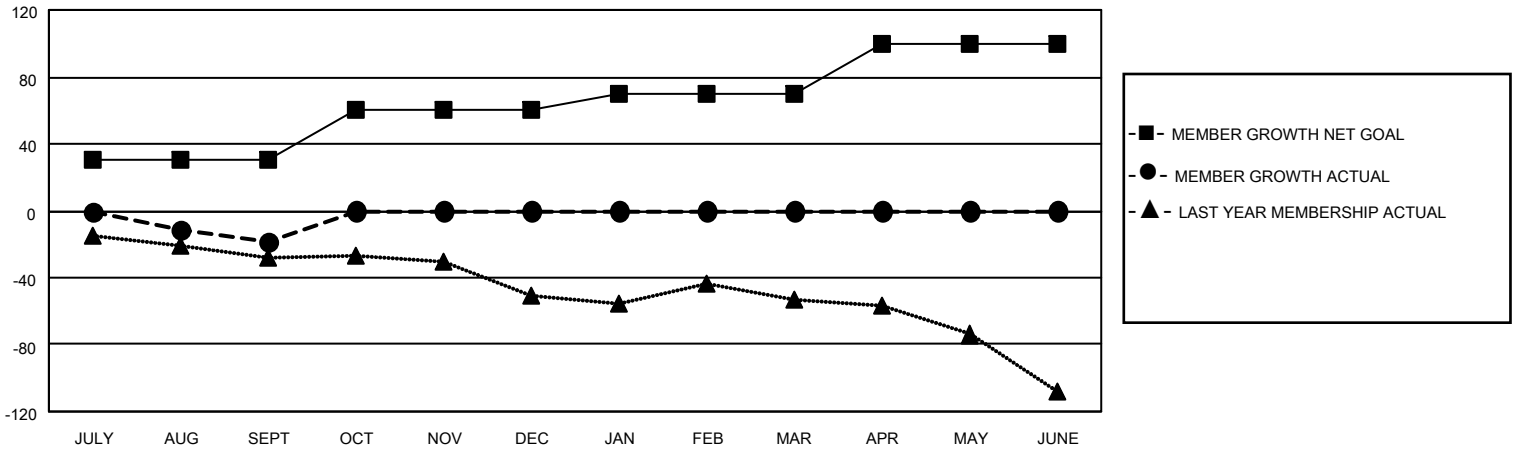
Clubs			
RESULTS FOR 2020-2021			
QUARTER	NEW CLUB GOAL	NEW CLUBS	DROPPED CLUBS
JULY/AUG/SEPT	0	0	0
OCT/NOV/DEC	0	0	0
JAN/FEB/MAR	1	0	0
APR/MAY/JUNE	0	0	0

Members			
RESULTS FOR 2020-2021			
QUARTER	MEMBER GROWTH NET GOAL	MEMBER GROWTH ACTUAL	DROPPED MEMBERS ACTUAL (including transfers)
JULY/AUG/SEPT	30	12	25
OCT/NOV/DEC	30	0	0
JAN/FEB/MAR	10	0	0
APR/MAY/JUNE	30	0	0

GOALS AND ACTUAL NEW CLUBS CUMULATIVE



GOALS AND ACTUAL MEMBERS CUMULATIVE



DROPPED CLUBS: 0	6 CLUBS OF 61 ADDED 1 OR MORE NEW MEMBERS	<u>GENDER DISTRIBUTION</u>
<u>DROPPED MEMBERS</u>	CLICK HERE FOR CUMULATIVE MEMBERSHIP DATA	MALE 1,013 (72.72%)
DECEASED 5		FEMALE 380 (27.28%)
CLUB CANCELLED 0		TOTAL FAMILY UNIT MEMBERS 234
OTHER 20		FAMILY MEMBERS PAYING HALF DUES 118
TOTAL 25		